

CABINET-BASED SOLUTION

RADIOLITE XP 4XX NEO

RADIO-SYNCHRONIZED, SCALABLE SOCIO-ASTRONOMICAL TIMER

Radiolite xp 4XX Neo is a radio-synchronized, socio-astronomical timer.

It is a programmable, energy-efficient solution designed to switch public lighting on and off at the optimal moment, following seasonal variations. It ensures synchronized operation city-wide while optimizing lighting cut-off periods.

- > Radiolite 410 Neo: 1 programmable Astro output
- > Radiolite 420 Neo: 2 programmable Astro outputs
- > Radiolite 430 Neo: 3 programmable Astro outputs
- > Radiolite 431 Neo: 3 programmable outputs (2 Astro, 1 scheduled)



BENEFITS

DAILY ENERGY SAVINGS

- ◆ Up to 300 hours of lighting saved per year
- ◆ Lighting only when and where needed
- ◆ Allows switching on at the threshold of visual perception without compromising public safety

SUSTAINABLE & RECYCLABLE SOLUTION

- ◆ Easily recyclable
- ◆ Optimized lifespan
- ◆ Designed and manufactured in France
- ◆ Partnered with Ecosystème to ensure an eco-responsible end-of-life process

MARKET-LEADING SOCIO-ASTRONOMICAL ACCURACY

Invented by BH Technologies and specially designed for public lighting, this patented algorithm optimizes switching by combining parameters such as: location, date, time, sun position angle, and sociological data on city activity.

EASY INSTALLATION & SCALABLE USAGE

- ◆ Quick on-site installation
- ◆ Remote programming when connected to a LoRaWAN network with Glob antenna
- ◆ Enables full park supervision when connected to the BH Gate supervision module

FEATURES

WEEKLY & EXCEPTIONAL PROGRAMMING

- ◆ Cutoff scenario programming for nighttime periods
- ◆ Up to two cutoffs per night, for each day of the week
- ◆ Up to 20 exceptional programs: e.g., Christmas, National Holidays

TWILIGHT OFFSET

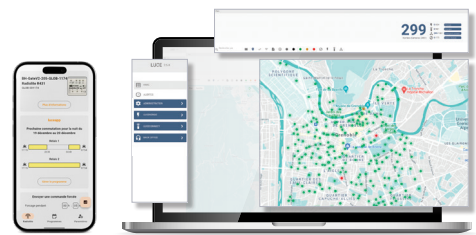
- ◆ Adjusts lighting on/off times to better match seasonal, daily, and location-specific changes
- ◆ Offset can be set between -99 and +99 minutes

3 PREDEFINED MODES

- ◆ Standard Astro, Socio-Astro Eco , Socio-Astro Comfort

REMOTE PROGRAMMING VIA LUCEAPP & LUCE PLATFORM

- ◆ LuceApp communicates locally: reading, programming, geolocation, and synchronization of programs with Luce
- ◆ Enables maintenance and operational tasks
- ◆ Luce is an intuitive business platform allowing full remote management of the lighting park



TECHNICAL SPECIFICATIONS

T° de fonctionnement : - 20 °C - + 60 °C

Operating temperature: -20 °C to +60 °C

Storage temperature: -20 °C to +40 °C

Operating voltage: 230V AC ± 15%

Surge withstand voltage: 4 kV

Voltage between contacts: 230V AC

Connection section: rigid cable, max 5 mm², min 1 mm²

Lifespan:

300,000 switchings (AC1, 3A)

250,000 switchings (AC15, 0.8A, cos φ 0.45)

Max altitude: 2,000 m

Power consumption: 4 VA (230V AC)

Applicable standard: IEC 60730-1

Case protection rating: IP20

Max humidity: 90%

Overvoltage category: III

SELV: Reinforced insulation

Dimensions (W x H x D): 53.5 x 86 x 54 mm



COMMERCIAL REFERENCES

> **L-RAD410-NEO** : Scalable astronomical timer, 1 programmable output, configuration via BH Box or LuceApp, no antenna

> **L-RAD420-NEO** : Scalable astronomical timer, 2 programmable outputs, configuration via BH Box or LuceApp, no antenna

> **L-RAD430-NEO** : Scalable astronomical timer, 3 programmable outputs, configuration via BH Box or LuceApp, no antenna

> **L-RAD431-NEO** : Scalable astronomical timer, 3 programmable outputs (2 Astro + 1 scheduled), configuration via BH Box or LuceApp, no antenna